

PRESIDENT
R. Gerald Turner

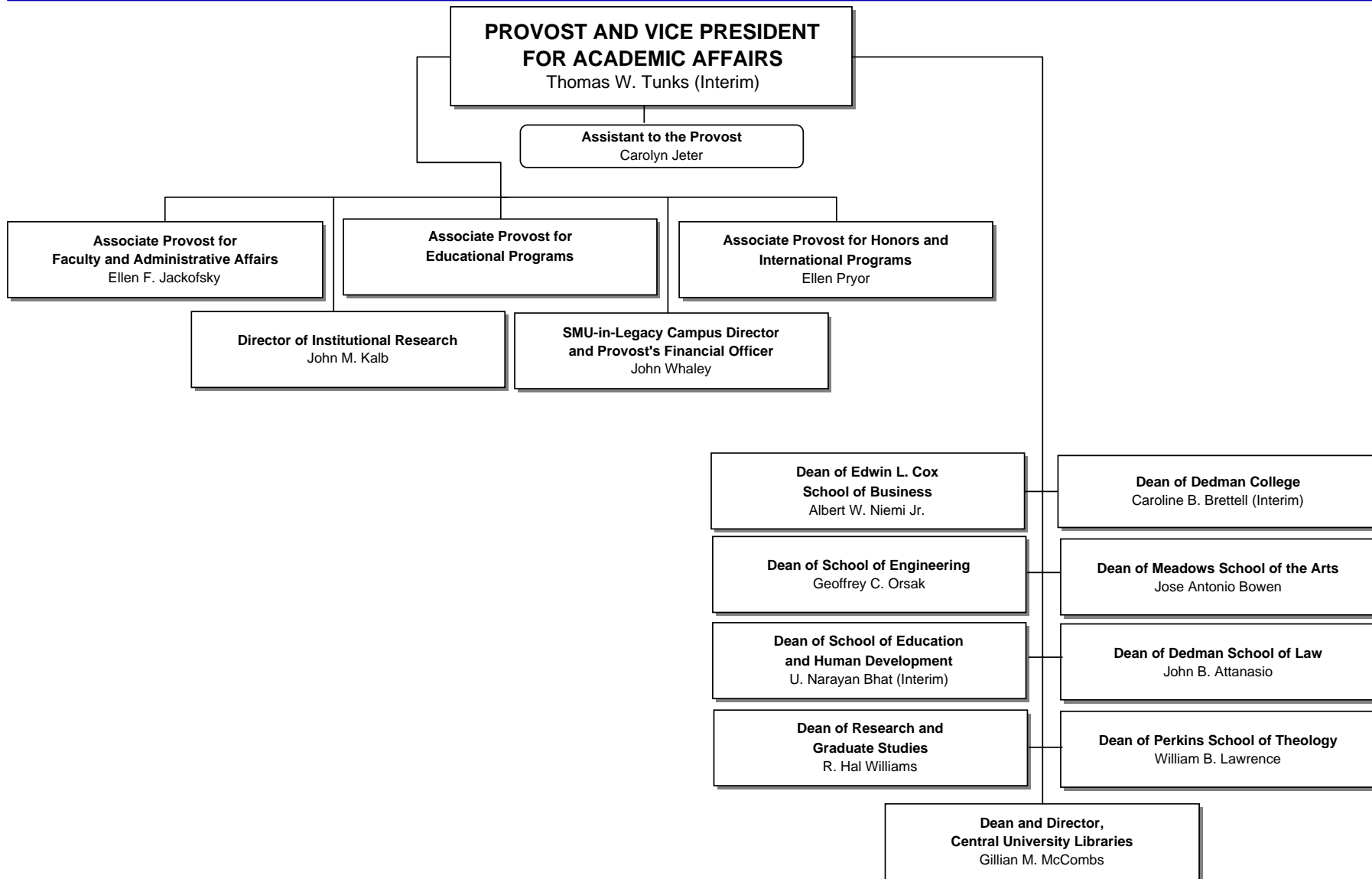
Vice President for Executive Affairs
Thomas E. Barry

**Executive Assistant to the President,
Director of Institutional Access and Equity**
Beth Wilson

Executive Assistant
Mary Jane Johnson

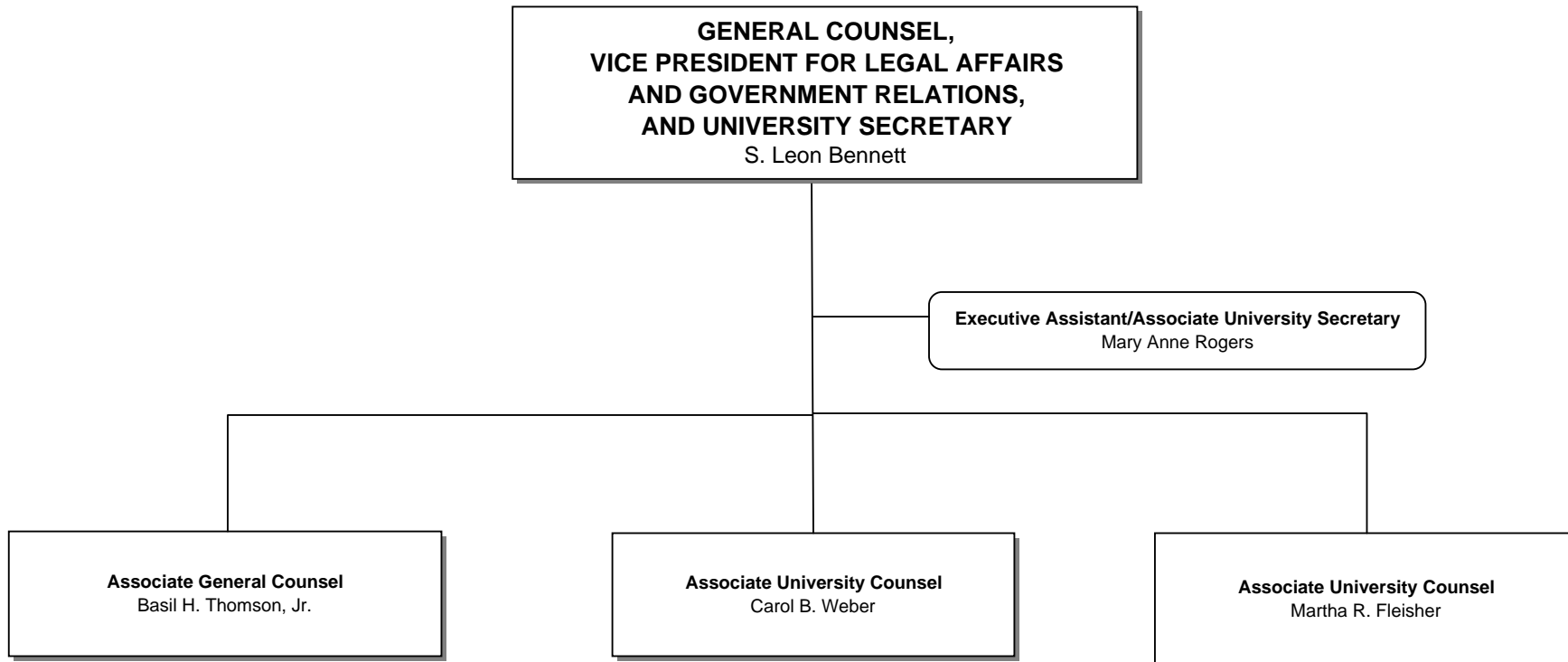
Treasurer
Elizabeth C. Williams

Director of Internal Audit



VICE PRESIDENT

Associate Vice President and Controller
John O'Connor



TREASURER
Elizabeth C. Williams

Administrative Assistant
Cheryl Badley

Director of Investment Operations
Liz Foster



**VICE PRESIDENT FOR DEVELOPMENT
AND EXTERNAL AFFAIRS**

Brad E. Cheves

Associate Vice President and

